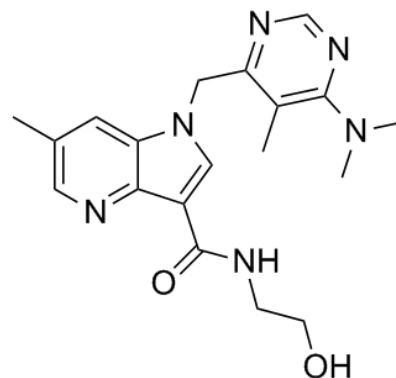


Product Name : DprE1-IN-25
Cat. No. : PC-42192
CAS No. : 1615713-87-5
Molecular Formula : C₁₉H₂₄N₆O₂
Molecular Weight : 368.4329
Target : Bacterial
Solubility : DMSO: ≥ 33 mg/mL



Biological Activity

A potent, noncovalent DprE1 inhibitor with IC₅₀ of 43 nM, shows activity against Mycobacterium tuberculosis (Mtb) in vitro with MIC of 0.39 μM.

References

Shirude PS, et al. J Med Chem. 2014 Jul 10;57(13):5728-37.

Caution: Product has not been fully validated for medical applications. Lab Use Only!

E-mail: tech@probechem.com